



ERCC1 Monoclonal Antibody(1B10)

Catalog No	YP-Ab-01111
Isotype	IgG
Reactivity	Human
Applications	WB;IHC;IF;
Gene Name	ERCC1
Protein Name	DNA excision repair protein ERCC-1
Immunogen	Synthetic Peptide of ERCC1
Specificity	The antibody detects endogenous ERCC1 proteins.
Formulation	PBS, pH 7.4, containing 0.5%BSA, 0.02% sodium azide as Preservative and 50% Glycerol.
Source	Monoclonal, Mouse
Purification	The antibody was affinity-purified from mouse ascites by affinity-chromatography using specific immunogen.
Dilution	IHC-p: 100-300.WB: 1:1000. IF 1:50-200
Concentration	1 mg/ml
Purity	≥90%
Storage Stability	-20°C/1 year
Synonyms	ERCC1; DNA excision repair protein ERCC-1
Observed Band	36kD
Cell Pathway	[Isoform 1]: Nucleus .; [Isoform 2]: Cytoplasm . Nucleus .; [Isoform 3]: Nucleus .; [Isoform 4]: Nucleus .
Tissue Specificity	Cerebellum,Lung,Ovarian cancer,Uterus,
Function	disease:Defects in ERCC1 are the cause of cerebro-oculo-facio-skeletal syndrome type 4 (COFS4) [MIM:610758]. COFS is a degenerative autosomal recessive disorder of prenatal onset affecting the brain, eye and spinal cord. After birth, it leads to brain atrophy, hypoplasia of the corpus callosum, hypotonia, cataracts, microcornea, optic atrophy, progressive joint contractures and growth failure. Facial dysmorphism is a constant feature. Abnormalities of the skull, eyes, limbs, heart and kidney also occur.,function:Structure-specific DNA repair endonuclease responsible for the 5'-incision during DNA repair.,similarity:Belongs to the ERCC1/RAD10/SWI10 family.,subunit:Heterodimer composed of ERCC1 and XPF/ERRC4.,
Background	The product of this gene functions in the nucleotide excision repair pathway, and is required for the repair of DNA lesions such as those induced by UV light or formed by electrophilic compounds including cisplatin. The encoded protein forms a heterodimer with the XPF endonuclease (also known as ERCC4), and the



heterodimeric endonuclease catalyzes the 5' incision in the process of excising the DNA lesion. The heterodimeric endonuclease is also involved in recombinational DNA repair and in the repair of inter-strand crosslinks. Mutations in this gene result in cerebrooculofacioskeletal syndrome, and polymorphisms that alter expression of this gene may play a role in carcinogenesis. Multiple transcript variants encoding different isoforms have been found for this gene. The last exon of this gene overlaps with the CD3e molecule, epsilon associated protein ge

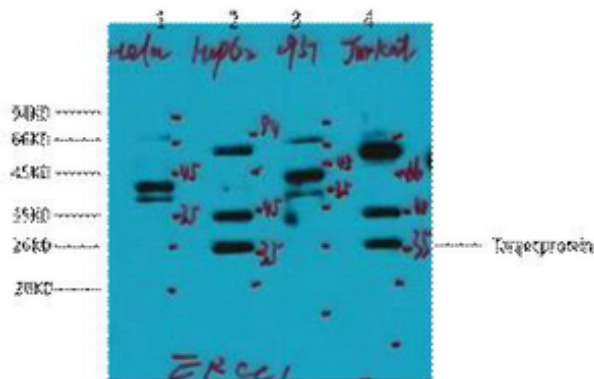
matters needing attention

Avoid repeated freezing and thawing!

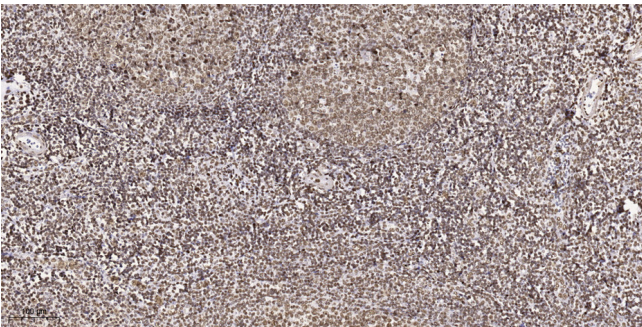
Usage suggestions

This product can be used in immunological reaction related experiments. For more information, please consult technical personnel.

Products Images



Western blot analysis of 1) HeLa, 2) HepG2, 3) 293T, 4) Jurkat, diluted at 1:2000. cells nucleus extracted by Minute TM Cytoplasmic and Nuclear Fractionation kit (SC-003, Inventbiotech, MN, USA).



Immunohistochemical analysis of paraffin-embedded human tonsil. 1, Tris-EDTA, pH9.0 was used for antigen retrieval. 2 Antibody was diluted at 1:200(4° overnight. 3, Secondary antibody was diluted at 1:200(room temperature, 45min).